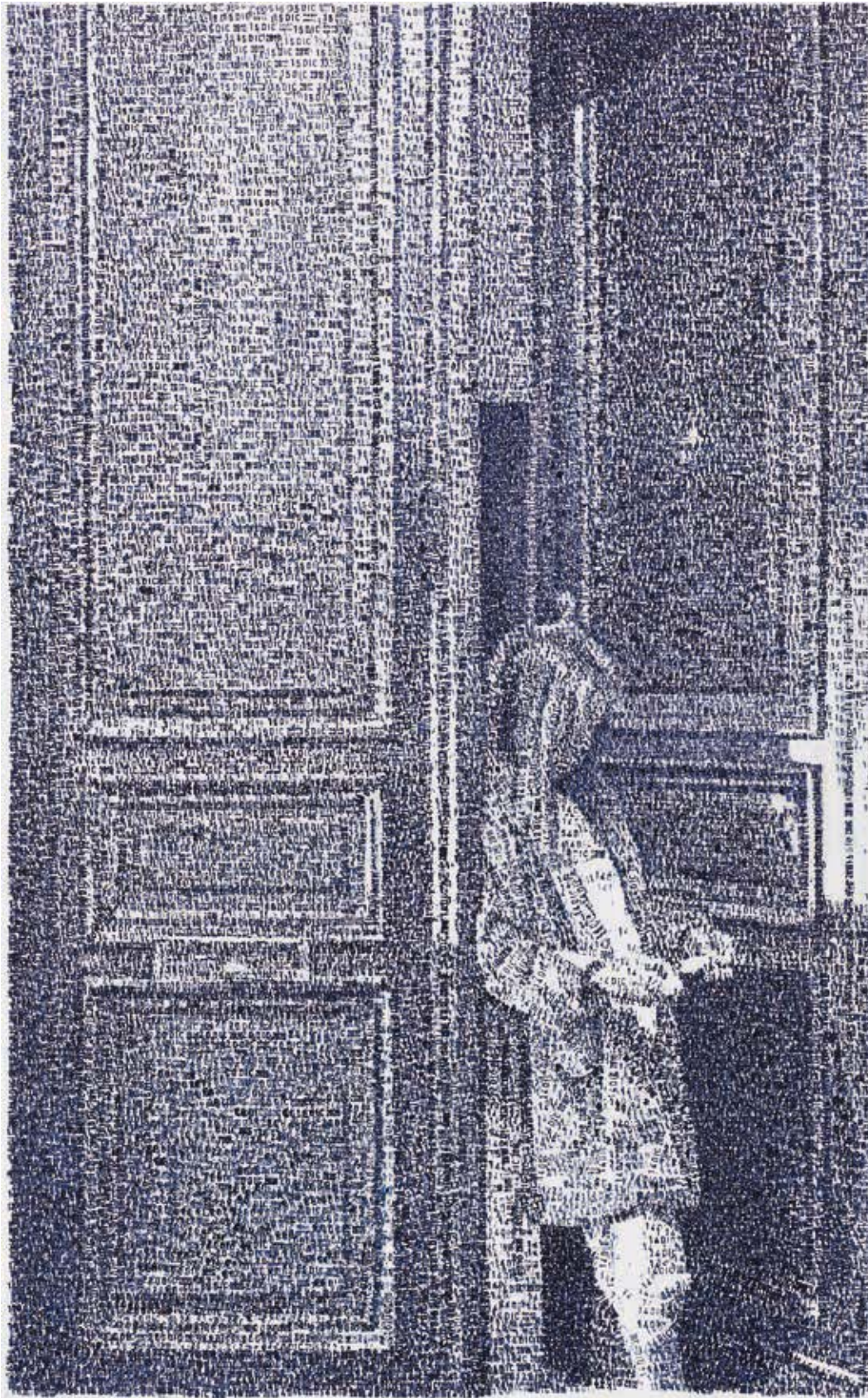


FEDERICO PIETRELLA

SIMPLE PRESENT



GALERIE BORN / Berlin / Born a. Darss / Projektraum Heiddorf



“Dal 14 al 20 Dicembre 2016”, 2016
date stamps with oil on canvas, 80x50 cm

Simple Present

Betrachtet man die Arbeiten von Federico Pietrella, ist man im ersten Moment verwirrt. Wie sind sie gemacht, fragt man sich automatisch, die detailscharfen Portraits, Landschaften, urbanen Räume. Die Frage, wie er zu seinen Motiven kommt, erübrigt sich. Das tägliche Leben begegnet uns. Der Blick aus dem Fenster in den Wolkenhimmel, Wohnräume des Künstlers, der winterliche Tiergarten in Berlin und

Pietrellas Malerei hat einen starken fotorealistischen Charakter, aber von allen Künstlern dieser Richtung unterscheidet er sich stark. Auf die Arbeit mit einem Malpinsel oder Malspachtel verzichtet er vollkommen. Federico Pietrella malt mit einem Gummistempel, einem Datumsstempel. Das setzt eine außergewöhnliche Beherrschung des Malraumes voraus. Denn vor dem Aufsetzen des Stempels muss der kleinste Teil von diesem berücksichtigt werden. Bei der täglichen Arbeit wird immer das aktuelle Datum eingestellt, aus den Titeln seiner Arbeiten kann man den ersten und letzten Tag der Arbeit am jeweiligen Werk erkennen.

Der Ausstellungstitel „Simple Present“ kann als Hinweis für diese Arbeit mit dem Datumsstempel stehen, als Fortschreiten der Zeit, die im Wachsen der Bilder dokumentiert wird.

Simple Present

On encountering the work of Federico Pietrella one is initially bewildered, and automatically asks, how are they made, the precisely detailed portraits, landscapes, urban spaces? The question of his choice through the window, the artist's living room, Berlin's Tiergarten in winter, and the portraits, frequently of his wife and daughter.

Pietrella's paintings have a strong photorealistic character, however he is quite distinct from all other artists of this current. He completely dispenses with brushes or spatulas in his work. Federico Pietrella paints with a rubber stamp, a date stamp. This assumes an extraordinary mastery of the pictorial space. Before applying the stamp every part of it must be considered, down to the smallest detail. and the last day he worked on the respective picture.

“Simple Present“ serves as a reference to his work with the date stamp. The progress of time is documented through the growth of the pictures.

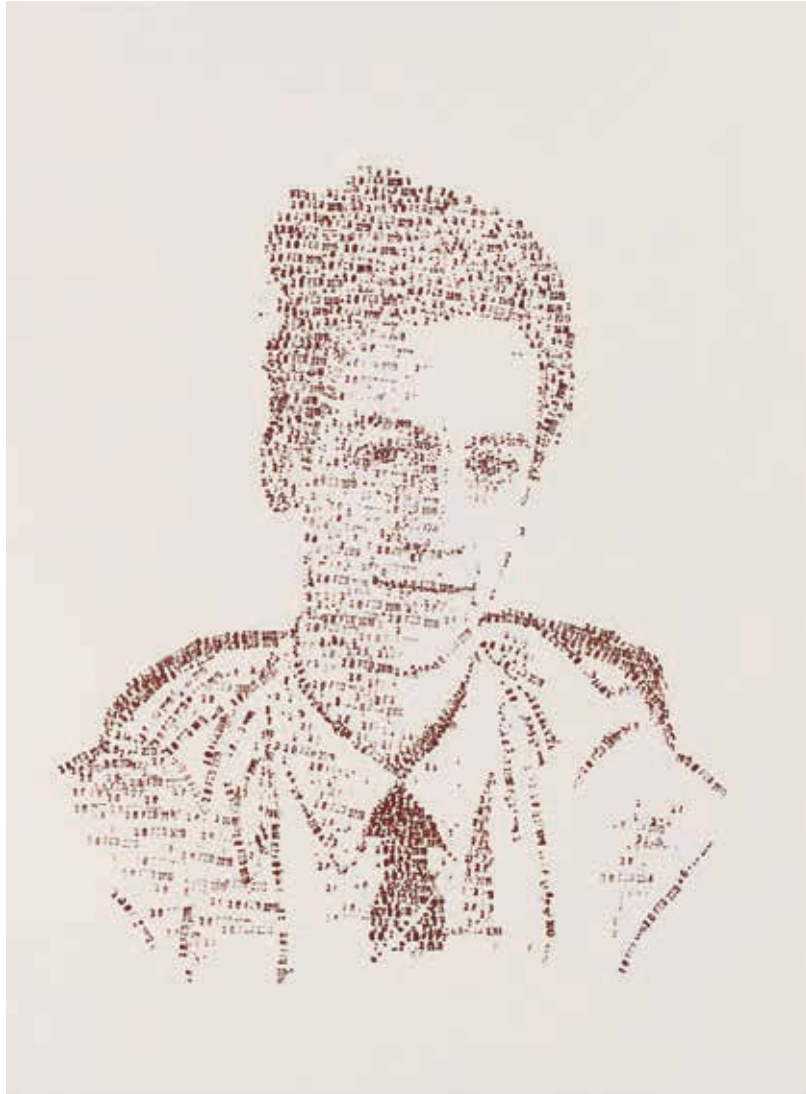


"Dal 3 al 5 Marzo 2019", 2019
date stamps with acrylic on wooden panel, 100x70 cm

“Dal 18 Gennaio al 5 Marzo 2019”, 2019, date stamps with oil on canvas, 125x220 cm

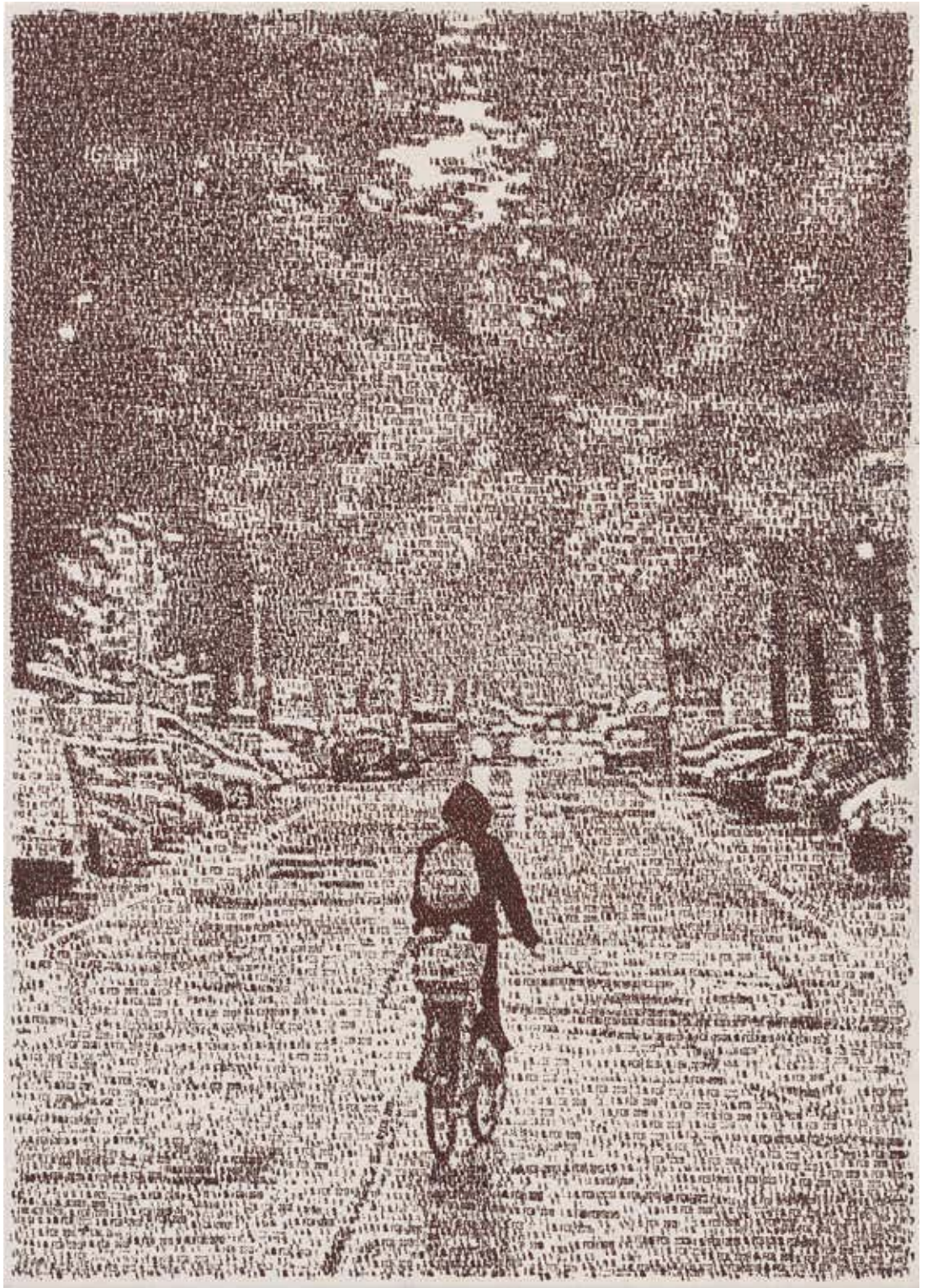


“8 Dicembre 2018”, 2018
date stamps with acrylic on wooden panel, 58x42 cm



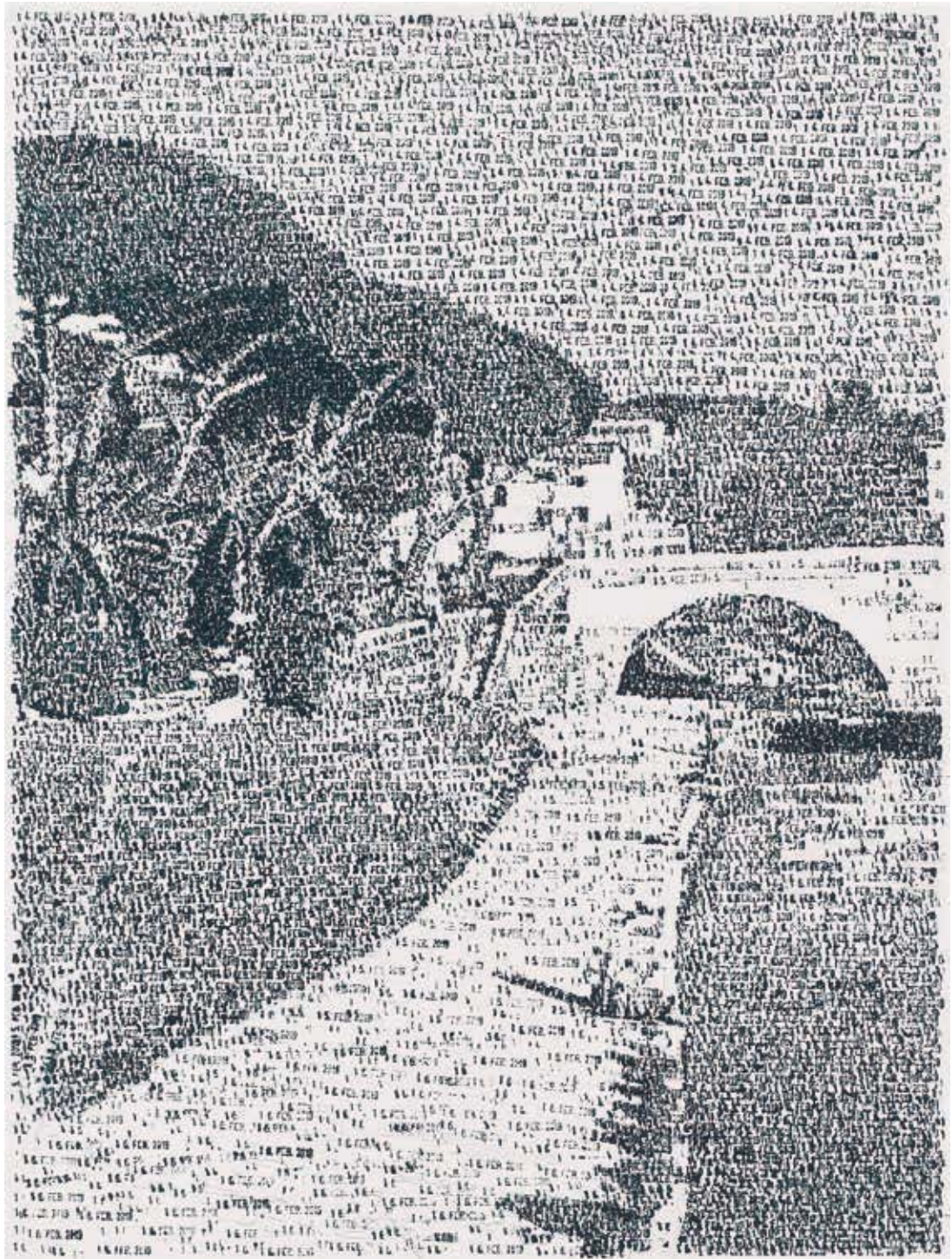
“28 Febbraio 2019”, 2019
date stamps with acrylic on wooden panel, 58x42 cm

“Dal 16 al 19 Febbraio 2019”, 2019
date stamps with acrylic on canvas, 70x50 cm



“Dal 3 al 6 Dicembre 2018”, 2018
date stams with acrylic on canvas, 75x110 cm

“Dal 14 al 16 Febbraio 2019”, 2019
date stamps with acrylic on canvas, 60x45 cm





“20 Febbraio 2019”, 2019
date stamps with acrylic on wooden panel, 50x60 cm

Federico Pietrella

Is born in 1973 in Rome. He lives and works in Berlin.

Education

FJJFŠ&^ [ACE!cā•cā& [AXāæĀāāÜā] ^ccæĒĀÜ [{ æ
FJJH . FJJĪ ACE&&æā^ { āæĀāāŌ^| ^ACE!cāĀāāÜ [{ æĒĀÜ [{ æ
1998 Erasmus: Koninklijke Academie voor Schone Kunsten, Antwerpen

Solo exhibitions

(selection)

2019

Simple Present, Galerie Born, Berlin

2016

Šq [!æĀā^|Āc-Ā . ĀVæĀVā { ^ĒĀ-! [{ Āc@^Ā& ^&| ^ACE] } ~ } cāĀāā~ } æĀ*^ } ^!æ: ā [] ^ĒĀ&~ !æc^āĀā~ Ā
Ō [•cæ } cā } [ĀŌqU!æ: ā [ĒĀTCEŌŪŪĀ . ĀT ~ •^ [ĀāqCE!c^ĀŌ [] c^ { } [!æ } ^æĒĀcāæĀPā: : æĒĀÜ [{ æ

2014

Ū~æā!āāqā } c^! } [ĒĀ&~ !æc^āĀā~ ĀŌæçāāĀŌ^! !āĒĀŌ [] āæ: ā [] ^Ā• { CEŪVĀ . Ā] [[Ā] ^!Ā|qæ!c^ĒĀÜ [{ æ

2013

Ō^ā^!ā& [ĀŪā^c!^|!æĒĀP^ , ĀY [!\•ĒĀŌæ||^!āæĀŌā~ •^]] ^ĀŪ^! [ĒĀTā|æ } [

2011

Ō^!ĀŪ [æ: ā^! *æ } *ĒĀ&~ } ā|æç [!āĀāæ|ĀFJJĪĀæāĀ [* *āĒĀ&~ !æc^āĀā~ ĀŌā [çæ } } æĀPā& [| ^ccāĒĀ
TCEŌĀ . ĀT ~ •^ [ACE|c [ĀŌæ!āæĒĀŌæ||^!āæĀŌçā&æĀŌĒŪ^*æ } cā } āĒĀCE!& [

2010

W}æĀŪc [!āæĒĀ&~ !æc^āĀā~ ĀŠ [!^] : [ĀŌ!~ } āĒĀXāæĀP~ [çæĀCE!c^ĀŌ [] c^ { } [!æ } ^æĒĀŌā!^ } : ^

2009

Ō^ā^!ā& [ĀŪā^c!^|!æĒĀ , [!\•Ā-! [{ Āc@^Ā! æĒĀ&~ !æc^āĀā~ ĀŌ^ā^!ā& [ĀTæ: : [] ^|!āĒĀ
Paolo Maria Deanesi Gallery, Rovereto

2008

Thirty-one days painting in black, curated by Lorenzo Benedetti, Assab One, Milano
Ō^ā^!ā& [ĀŪā^c!^|!æĒĀŪæ!^ĀŌæ||^!^Āç] : [b^&cĀ! [[{ DEĀP^ , ĀŸ [!\

2006

Da lunedì 27 Marzo a lunedì 3 Aprile 2006, curated by Elio Grazioli, Assab One, Milano
Un progetto per A+M Bookstore, A+M Bookstore, Milano

2003

Da martedì 25 Febbraio a martedì 11 marzo 2003, curated by Roberto Pinto,
Studio d'Arte Cannaviello, Milano
Federico Pietrella, curated by Marisa Prihodova, Futura Gallery, Praga

2001

London Frames, curated by Giuliana Stella, Studio d'Arte Cannaviello, Milano
London Frames, curated by Mario Fortunato, Italian Cultural Institute, London



"10 Giugno 2010", 2010,
date stamps with oil on polyester, 30x40 cm

